



# SUBMITTAL/TECHNICAL DATA SHEET

**Doors** are Fire Rated by Underwriters Laboratories Inc., for 1-1/2 hours, "B" Label, ANSI-UL 10B standard, and CAN/ULC S104 for 2 hours in walls. Door has a heavy duty spring closer to assure positive latching when panel closes. **This door is for wall installation only.**

**Door and Frame** are fabricated from 16 gauge, galvanized steel with a white prime coat finish.

**Door** has a heavy duty spring to assure positive latching.

**Frame** is equipped with both masonry anchors and bolt holes to facilitate installation in all types of wall construction.

**Concealed Hinge** operates completely out of sight so that only the door and frame is visible.

**Exterior Latch** is recessed and is operated using a ring attached to the sliding bolt.

**Interior Latch Release Slide** is included enabling door to be opened from the inside.

**Finish** is a white prime coat suitable for painting.

## GUIDE SPECIFICATION

Fire Rated Access Doors (specify model number and options). Access door and frame shall be fabricated from 16 gauge, galvanized steel with a white prime coat finish. Hinge shall be concealed type. Door shall have a heavy duty spring to provide positive latching when closed and an interior latch release slide enabling door to be opened from the inside. Exterior latch shall be recessed and operated using ring attached to the sliding bolt. Finish shall be a white prime coat suitable for painting.

## MODEL NUMBER AND OPTIONS SELECTION

### BASE MODEL NUMBER

■ -FR Fire Rated Access Door

### SUFFIX OPTIONS

■ -CL Cylinder Lock (one per door)  
■ -SS Stainless Steel Construction (Type 304 No. 4 Satin Finish)

For a complete list of options visit  
[www.CaliforniaAccessDoors.com](http://www.CaliforniaAccessDoors.com)

SKU: **CAD-FR**

## FIRE RATED WALL ACCESS DOORS



## DIMENSIONS AND APPEARANCE

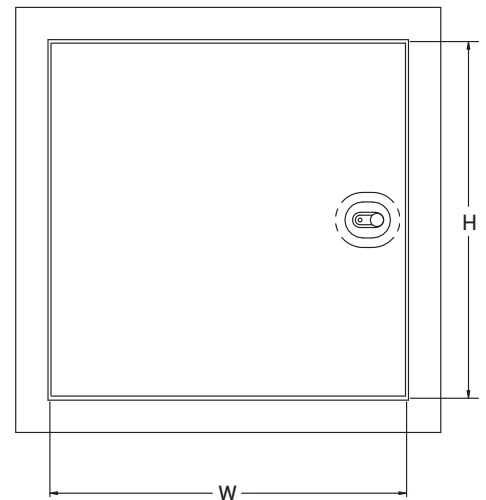
>> CLICK TO VIEW ADDITIONAL DETAILS AND PRICING <<

### STANDARD SIZES:

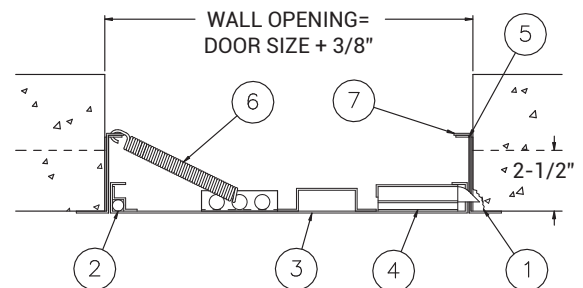
NOMINAL DOOR SIZE (W x H)	WALL OPENING (minimum required)	LOCK QTY	WEIGHT LBS
FR 8" x 8"	8-1/2" x 8-1/2"	1	6.0 LBS.
FR 10" x 10"	10-1/2" x 10-1/2"	1	7.5 LBS.
FR 12" x 12"	12-1/2" x 12-1/2"	1	9.0 LBS.
FR 12" x 18"	12-1/2" x 18-1/2"	1	10.5 LBS.
FR 12" x 24"	12-1/2" x 24-1/2"	1	13.0 LBS.
FR 14" x 14"	14-1/2" x 14-1/2"	1	10.0 LBS.
FR 16" x 16"	16-1/2" x 16-1/2"	1	12.5 LBS.
FR 18" x 18"	18-1/2" x 18-1/2"	1	15.0 LBS.
FR 20" x 20"	20-1/2" x 20-1/2"	1	18.0 LBS.
FR 22" x 22"	22-1/2" x 22-1/2"	1	22.0 LBS.
FR 22" x 30"	22-1/2" x 30-1/2"	2	28.0 LBS.
FR 24" x 24"	24-1/2" x 24-1/2"	2	24.5 LBS.
FR 24" x 36"	24-1/2" x 36-1/2"	2	33.0 LBS.
FR 24" x 48"	24-1/2" x 48-1/2"	2	42.0 LBS.
FR 30" x 30"	30-1/2" x 30-1/2"	2	33.5 LBS.
FR 32" x 32"	32-1/2" x 32-1/2"	2	35.0 LBS.
FR 36" x 36"	36-1/2" x 36-1/2"	2	43.0 LBS.
FR 36" x 48"	36-1/2" x 48-1/2"	2	74.0 LBS.

### NOTES:

1. CHIP OUT MASONRY TO CLEAR BOLT COVER
2. CONCEALED HINGE
3. DOOR
4. RECESSED LATCH
5. INTERIOR LATCH RELEASE SIDE
6. CLOSING SPRING
7. FRAME



FRONT VIEW




SIDE VIEW

## PROJECT DATA

Custom Sizes Available - Fast!

PROJECT NAME :	QTY	W	H	OPTIONS
ARCHITECT :				
DEALER :				
CONTRACTOR :				
LOCATION :	SPECIAL INSTRUCTIONS :			
DATE :				
TAGGING INSTRUCTIONS :	SUBMITTAL APPROVAL : (signature or stamp)			

Scan  or 



To view Pricing and  
Additional Product Info.



TELEPHONE:  
1-800-656-1095  
FAX:  
1-888-828-6021



PO BOX 7775 PMB  
76520, SAN FRANCISCO,  
CALIFORNIA 94120-7775  
US



WEBSITE:  
[www.CaliforniaAccessDoors.com](http://www.CaliforniaAccessDoors.com)  
E-MAIL:  
[info@CaliforniaAccessDoors.com](mailto:info@CaliforniaAccessDoors.com)